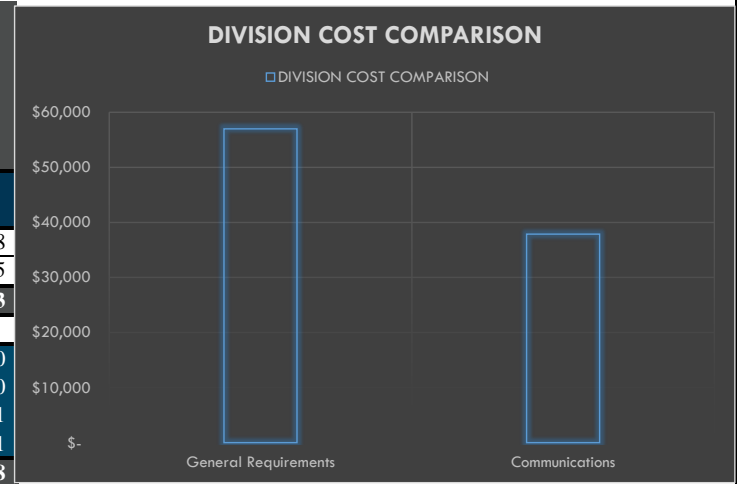


## GENERAL SUMMARY

**Prepared for:**  
**Project ID:**  
**Scope:** Communications  
**No. Of Floors:** 4  
**Date:** 16-Dec-23



BUILDING GSF	7,124		
Cellar Floor(SF)	1404		
1st Floor (SF)	1435		
2nd Floor (SF)	1427		
3rd Floor (SF)	1427		
Roof (SF)	1432		
DIVISION NO	DESCRIPTION	TOTAL DIV. COST	TOTAL DIV. COST (PER SF)
1000	General Requirements	\$ 57,000	\$ 8
27000	Communications	\$ 37,861	\$ 5
<b>TOTAL TRADE COST</b>		<b>\$ 94,861</b>	<b>\$ 13</b>
<b>OVERHEAD AND PROFIT</b>			
	15%	\$ 14,229	\$ 2.00
INSURANCE	3%	\$ 2,846	\$ 0
CONTINGENCY	5%	\$ 4,743	\$ 1
TAX	8.88%	\$ 0	\$ 1
<b>SUGGESTED BID</b>		<b>\$ 116,679</b>	<b>\$ 18</b>



**DETAILED BREAKDOWN OF ITEMS**

Prepared for:  
Project ID:  
Scope:

Communications



Date: 16-Dec-23

SR #	Drawing #	Detail #	DESCRIPTION	UNIT	QUANTITY	WASTAGE	QUANTITY W/ WASTAGE	UNIT MANHOOUR	HOURLY WAGE	LABOR COST	MAT. COST	UNIT COST	SUB COST
<b>GENERAL REQUIREMENTS</b>													
1			Permits	LS	1	0%	1	0.000	\$ -	\$ -	\$ -		\$ -
2			Supervision and Coordination	LS	1	0%	1	0.000	\$ -	\$ -	\$ -	\$ 27,000.00	\$ 27,000.00
3			Submittals and Shop drawings	LS	1	0%	1	0.000	\$ -	\$ -	\$ -	\$ 2,500.00	\$ 2,500.00
4			Final Cleaning	LS	1	0%	1	0.000	\$ -	\$ -	\$ -	\$ 3,000.00	\$ 3,000.00
5			Mobilization Costs	LS	1	0%	1	0.000	\$ -	\$ -	\$ -	\$ 17,000.00	\$ 17,000.00
6			Temporary Control & Facilities	LS	1	0%	1	0.000	\$ -	\$ -	\$ -	\$ 6,500.00	\$ 6,500.00
7			Scaffolding	LS	1	0%	1	0.000	\$ -	\$ -	\$ -	\$ 1,000.00	\$ 1,000.00
												<b>SUBTOTAL</b>	\$ 57,000
<b>COMMUNICATIONS</b>													
<b>TELECOMMUNICATION</b>													
<b>CONDUIT</b>													
8			1/2" EMT Conduit	LF	30	10%	33	0.030	\$ 78.00	\$ 2.34	\$ 1.34	\$ 3.68	\$ 120.27
9			3/4" EMT Conduit	LF	114	10%	125	0.036	\$ 78.00	\$ 2.81	\$ 1.64	\$ 4.45	\$ 557.00
10			1" EMT Conduit	LF	53	10%	58	0.040	\$ 78.00	\$ 3.12	\$ 2.42	\$ 5.54	\$ 321.70
11			1-1/2" EMT Conduit	LF	10	10%	11	0.050	\$ 78.00	\$ 3.90	\$ 3.87	\$ 7.77	\$ 85.81
<b>J-HOOKS</b>													
12			2" J-Hooks	EA	21	0%	21	0.045	\$ 78.00	\$ 3.51	\$ 1.14	\$ 4.65	\$ 97.69
<b>CONDUCTOR</b>													
13			CAT5e Cable	LF	2078	10%	2286	0.015	\$ 78.00	\$ 1.17	\$ 0.35	\$ 1.52	\$ 3,474.17
<b>DEVICES</b>													
14			2 Port Data Outlet	EA	11	0%	11	0.220	\$ 78.00	\$ 17.16	\$ 16.23	\$ 33.39	\$ 367.29
15			RJ45 Connector	EA	22	0%	22	0.005	\$ 78.00	\$ 0.39	\$ 0.85	\$ 1.24	\$ 27.28
16			Back Box	EA	11	0%	11	0.080	\$ 78.00	\$ 6.24	\$ 8.74	\$ 14.98	\$ 164.78
17			Face Plate	EA	11	0%	11	0.080	\$ 78.00	\$ 6.24	\$ 9.95	\$ 16.19	\$ 178.09
18			4 Port Data Outlet	EA	2	0%	2	0.250	\$ 78.00	\$ 19.50	\$ 18.65	\$ 38.15	\$ 76.30
19			RJ45 Connector	EA	8	0%	8	0.005	\$ 78.00	\$ 0.39	\$ 0.85	\$ 1.24	\$ 9.92
20			Back Box	EA	2	0%	2	0.080	\$ 78.00	\$ 6.24	\$ 8.74	\$ 14.98	\$ 29.96
21			Face Plate	EA	2	0%	2	0.080	\$ 78.00	\$ 6.24	\$ 9.95	\$ 16.19	\$ 32.38
22			Data Outlet, Ceiling Mounted	EA	8	0%	8	0.220	\$ 78.00	\$ 17.16	\$ 17.50	\$ 34.66	\$ 277.28
23			RJ45 Connector	EA	8	0%	8	0.005	\$ 78.00	\$ 0.39	\$ 0.85	\$ 1.24	\$ 9.92
24			Back Box	EA	8	0%	8	0.080	\$ 78.00	\$ 6.24	\$ 8.74	\$ 14.98	\$ 119.84
25			Face Plate	EA	8	0%	8	0.080	\$ 78.00	\$ 6.24	\$ 9.95	\$ 16.19	\$ 129.52
26			Data Outlet, Wall Mounted	EA	1	0%	1	0.200	\$ 78.00	\$ 15.60	\$ 17.50	\$ 33.10	\$ 33.10
27			RJ45 Connector	EA	1	0%	1	0.005	\$ 78.00	\$ 0.39	\$ 0.85	\$ 1.24	\$ 1.24
28			Back Box	EA	1	0%	1	0.080	\$ 78.00	\$ 6.24	\$ 8.74	\$ 14.98	\$ 14.98
29			Face Plate	EA	1	0%	1	0.080	\$ 78.00	\$ 6.24	\$ 9.95	\$ 16.19	\$ 16.19
30			Network Patch Panel	EA	1	0%	1	0.725	\$ 78.00	\$ 56.55	\$ 112.23	\$ 168.78	\$ 168.78
31			Wireless Access Point	EA	8	0%	8	0.420	\$ 78.00	\$ 32.76	\$ 120.23	\$ 152.99	\$ 1,223.92
<b>SECURITY</b>													
<b>CONDUIT</b>													
32			1" EMT Conduit	LF	43	10%	47	0.040	\$ 78.00	\$ 3.12	\$ 2.42	\$ 5.54	\$ 261.68
33			1-1/2" EMT Conduit	LF	61	10%	67	0.050	\$ 78.00	\$ 3.90	\$ 3.87	\$ 7.77	\$ 521.62
34			3" EMT Conduit	LF	12	10%	14	0.092	\$ 78.00	\$ 7.18	\$ 8.45	\$ 15.63	\$ 211.59
<b>J-HOOKS</b>													
35			2" J-Hooks	EA	72	0%	72	0.056	\$ 78.00	\$ 4.37	\$ 3.57	\$ 7.94	\$ 571.54
<b>CONDUCTOR</b>													
36			CAT6 Cable	LF	3411	10%	3753	0.032	\$ 78.00	\$ 2.50	\$ 0.32	\$ 2.82	\$ 10,567.43
<b>DEVICES</b>													
37			Assumed Push Button	EA	2	0%	2	0.200	\$ 78.00	\$ 15.60	\$ 14.70	\$ 30.30	\$ 60.60

E400, E401 & E402

**DETAILED BREAKDOWN OF ITEMS**

Prepared for:  
Project ID:  
Scope:

Communications



Date: **16-Dec-23**

SR #	Drawing #	Detail #	DESCRIPTION	UNIT	QUANTITY	WASTAGE	QUANTITY W/ WASTAGE	UNIT MANHOUR	HOURLY WAGE	LABOR COST	MAT. COST	UNIT COST	SUB COST
38			Security Camera	EA	64	0%	64	0.425	\$ 78.00	\$ 33.15	\$ 195.23	\$ 228.38	\$ 14,616.32
			<b>AUDIO/VISUAL SYSTEM</b>										
			<b>CONDUIT</b>										
39			1/2" EMT Conduit	LF	396	10%	435	0.030	\$ 78.00	\$ 2.34	\$ 1.34	\$ 3.68	\$ 1,602.08
			<b>CONDUCTOR</b>										
40			#16 CU THHN/THWN	LF	792	10%	871	0.005	\$ 78.00	\$ 0.39	\$ 0.18	\$ 0.57	\$ 496.30
			<b>DEVICES</b>										
41			Ceiling Mounted Speaker	EA	16	0%	16	0.380	\$ 78.00	\$ 29.64	\$ 58.75	\$ 88.39	\$ 1,414.24
												<b>SUBTOTAL</b>	\$ 37,861
												<b>PROJECTED COST</b>	\$94,861
<b>OVERHEAD AND PROFIT</b>												15%	\$14,229
<b>INSURANCE</b>												3%	\$2,846
<b>CONTINGENCY</b>												5%	\$4,743
<b>TAX</b>												8.88%	\$0
<b>SUGGESTED BID</b>													\$116,679